



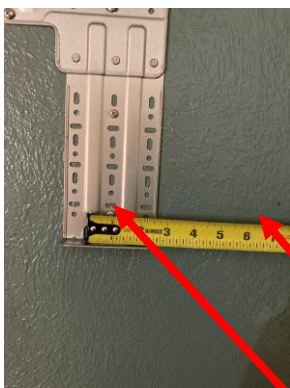
What's different on the HS24?



The alternating current power connection. This one doesn't simply plug into a normal outlet. So, we provided you with 10-gauge wire in this gray whip and a disconnect box.



240v 20 amp. So, yes, this unit doesn't just plug in like the 12k unit. Ultimately, if either through an outdoor plug or a disconnect box, the breaker in your electrical panel should be like this (although maybe not ABB brand—match it to be the same brand as the others in your panel).



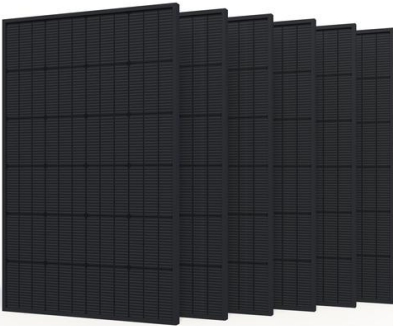
The hole location is about the same. What needs to be clarified on this one is that there are 3 columns of screws v. the 12k unit bracket. Use this middle one here. And use 6" vs. 6.5" to the right of this starting point. (It doesn't need to be exact, so don't stress over this).

Measure 6" to the right of this oval-shaped hole (above the bottom screw)

Start your measuring tape at this oval-shaped hole (above the bottom screw) (not to the left where the measuring tape currently is starting).



It's DIY, except for maybe installing the 24k indoor unit. We're all for independence, but instead of DIY, try to DIWAF (do it with a friend) when it comes to this larger head unit.



It's twice as big, and needs twice as much solar. Shoot for around 3,000 watts. It doesn't need to be exact. If you are under, then more grid power may be necessary. If you are over, then there may be some extra voltage that doesn't convert to energy. Either way, no big deal. So, still connect these in series. The open circuit voltage (Voc, found on the back of the panels) of these panels need to be between 100v and 410v, so there's a bit higher threshold.

What's not different on the HS24?

This unit is still pre-installed! It has been pre-tested on solar only, grid only, and a combination of both. It works! Do not find a hex wrench to open the valves on the outdoor unit! They are already opened correctly. Do not re-wire anything (except the main power for the unit if an electrical contractor is involved and you need to change something). We want you happy. You want you happy. So, just follow the main directions for the HS12 and just heed the exceptions above. If we're missing anything, advise, and we'll add it to this list for future recipients. Thanks again for your business.

Dave
(702)580-5760