



+



5-minute mini split connection... Quick 'n' Easy as...

5-minute mini split connection... Quick 'n' Easy as...



We'll customize this with bare wire or with your preferred plug lead. Just add it.

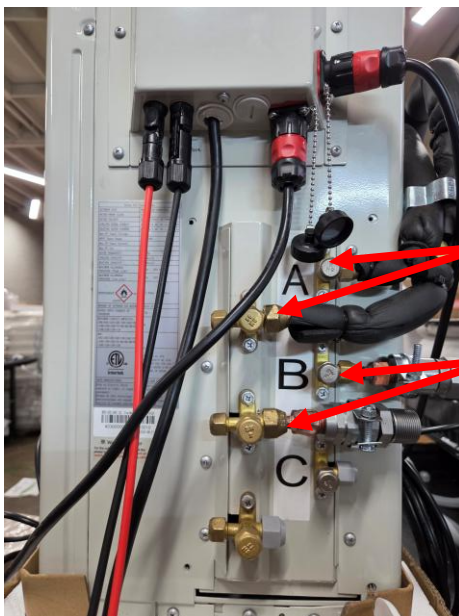


Quick 'n' Easy™

What's different on the MU24?



The alternating current power connection. This one doesn't simply plug into a normal outlet. So, we provided you with a whip with 10-gauge wire and a disconnect box.



2 ports for the refrigerant hoses. Well, there's a high-pressure and a low-pressure line for each port, so really 4 ports for the refrigerant hoses, but 2 for circuit 'A,' and 2 for circuit 'B.' (Note: if you selected the third-port option, then circuit 'C' will also be built out and ready for your third indoor unit.)



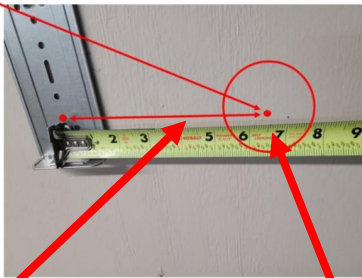
2 ports for the communication cables. Match the writing on the connector head with the corresponding label.



240v 20 amp. So, yes, this unit doesn't just plug in like the 12k unit. Ultimately, if either through an outdoor plug or a disconnect box, the breaker in your electrical panel should be like this (although maybe not ABB brand—match it to be the same brand as the others in your panel).

Mark a spot on the wall that's approximately 6.5" from the center of the hole above the bottom-right screw. See below. This will be the location of the 2.5" wall hole through which the line set, communications cable, and condensate drainpipe will travel.

If your electrical outlet for running the unit using alternating current is inside, the power cord will also travel through this hole from the outside unit to an inside power receptacle.



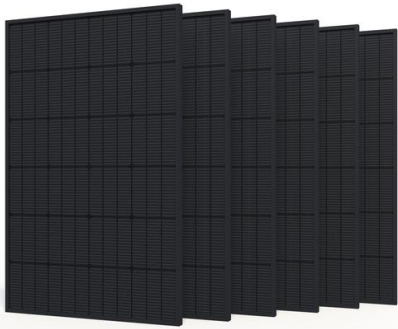
This is still valid for the 12k unit, but the 18k needs to be 4.5" from this hole in the plate to where you drill the hole. Don't worry—this doesn't need to be exact, but follow this guideline for easiest glide line (of the refrigerant lines, condensate hose, and communications wire) through the wall.

18k...center of drill here.

12k...center of drill here.



It's DIY, except for maybe installing the 18k indoor unit. We're all for independence, but instead of DIY, try to DIWAF (do it with a friend) when it comes to this larger head unit.



It's twice as big, and needs twice as much solar. Shoot for around 3,000 watts. It doesn't need to be exact. If you are under, then more grid power may be necessary. If you are over, then there may be some extra voltage that doesn't convert to energy. Either way, no big deal. So, still connect these in series. The open circuit voltage (Voc, found on the back of the panels) of these panels need to be between 100v and 410v, so there's a bit higher threshold.

What's not different on the MU24?

This unit is still pre-installed! It has been pre-tested on solar only, grid only, and a combination of both. It works! So, do not open or close valves (except the hand-connected quick connector ones). Do not find a hex wrench to open the valves on the outdoor unit! They are already opened correctly. Do not re-wire anything (except the main power for the unit if an electrical contractor is involved). We want you happy. You want you happy. So, just follow the main directions for the MS12 and just heed the exceptions above. If we're missing anything, advise, and we'll add it to this list or further explain, since you're a pioneer for this new technology, and Todd and company are working to make it so you shouldn't be taking too many arrows. Thanks again for your business.

Dave

(725)699-1200