



What's different on the MU36?



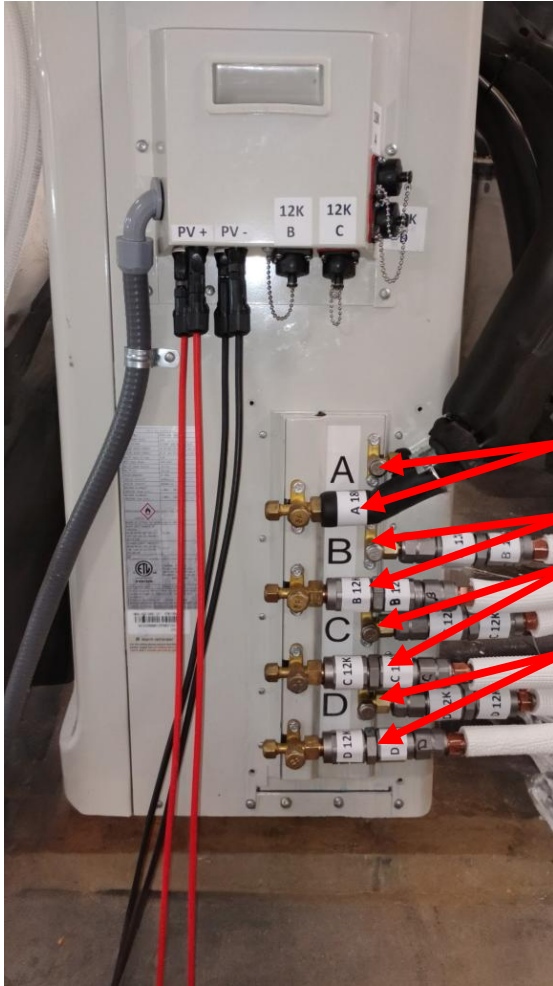
240v 30 amp. So, yes, this unit doesn't just plug in like the 12k unit. Ultimately, if either through an outdoor plug or a disconnect box, the breaker in your electrical panel should be like this (although maybe not ABB brand—match it to be the same brand as the others in your panel).



The power cord. This is a 10-gauge 6' whip and disconnect. So, this in turn needs to be connected to 10-gauge wire from the other side of this gray disconnect box to your 30-amp breaker.



More than 1 port for the communication cables. Match the writing on the connector head with the corresponding label. Got multiple, say, 12k heads? No problem. Just make sure a 12k male fits onto a 12k female port.



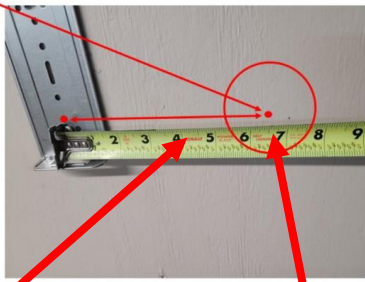
Multiple ports for the refrigerant hoses. There's a high-pressure and a low-pressure line for each port, so really 2 ports for the refrigerant hoses per circuit, so 2 for circuit 'A,' the 18k port (the black, flexible hose here), and 2 for circuit 'B' and circuit 'C' with copper line set. If any of these copper lines are extended to be longer, we will have them correctly labeled so you know which one goes where. For circuit 'B' and circuit 'C,' it doesn't matter which of the 12k heads you connect to these to two circuits. Just make sure that the correct-length communication cables go with the same-length line set, but you can put the 12k units either B or C. Port D is shown here, but not active for your installation.



Twisting by hand is a bit of a challenge! And, these are hard to twist by hand, since the area is tight, so we've included an adjustable pliers (with smoothed-down jaws to protect the valve) to tighten them. When are they tight enough? When there's no gap between the male and female halves of the valves, and when it feels tight. Do not overtighten! You'll know it when you feel it.

Mark a spot on the wall that's approximately 6.5" from the center of the hole above the bottom-right screw. See below. This will be the location of the 2.5" wall hole through which the line set, communications cable, and condensate drainpipe will travel.

If your electrical outlet for running the unit using alternating current is inside, the power cord will also travel through this hole from the outside unit to an inside power receptacle.



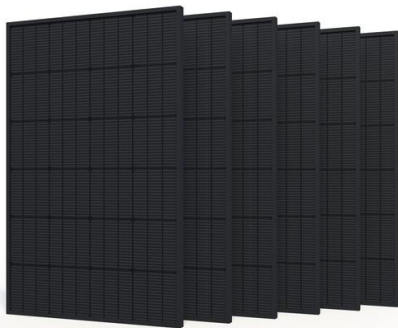
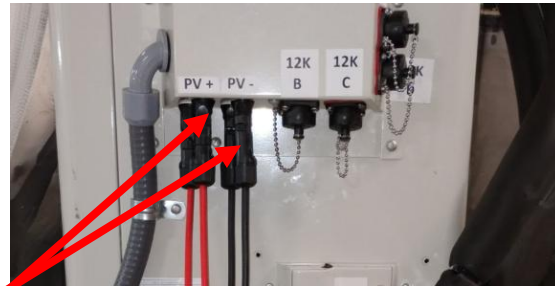
18k...center of drill here.

12k...center of drill here.

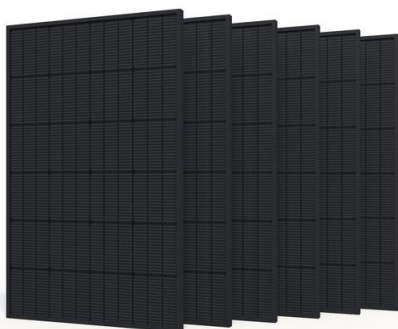
This distance is still valid for the 12k head or 24k head, but the 18k needs to be 4.5" from this hole in the plate to where you drill the hole. Don't worry—this doesn't need to be exact but follow this guideline for easiest glide line (of the refrigerant lines, condensate hose, and communications wire) through the wall.



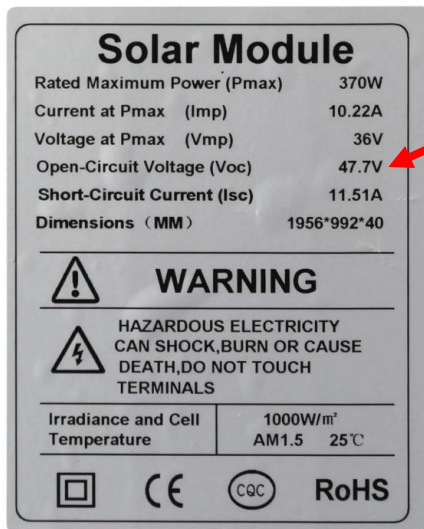
It's DIY, except for maybe installing the 18k indoor unit. We're all for independence, but instead of DIY, try to DIWAF (do it with a friend) when it comes to this larger head unit.



+



It's thrice as big, and needs 3x as much solar (ideally). Shoot for around 4,500 watts total. It doesn't need to be exact. If you are under, then more grid power may be used, and if you are over, then there may be some excess voltage that never converts to energy. No big deal either way. The other thing that's different? There are 2 MC4 jacks with 2 sets of solar whips on the outdoor unit, so actually, do around 2,250 watts of solar connected to the first set of red/black wires, and 2,250 watts of solar connected to the other one.



You don't need to have the same amount of solar on each circuit. But make sure that the open-circuit voltage (Voc) on the back of the panels add up to be between 100v and 400v on the 1st circuit (string) of panels and same for the 2nd circuit (string) of panels. It for sure will for around 2,250 watts connected in series boy/girl/boy/girl—just connect them together and they are in series.

What's not different on the MU36?

This unit is still pre-installed! It has been pre-tested on solar only, grid only, and a combination of both. It works! So, do not open or close valves (except the hand-connected quick connector ones). Don't find a hex wrench to open the small brass service port valves directly on the outdoor unit! They are already opened correctly. Do not re-wire anything. We want you happy. You want you happy. So, just follow the main directions for the MS12 and just heed the exceptions above. If we're missing anything, advise, and we'll add it to this list or further explain, since you're a pioneer for this new technology, and Todd and company are working to make it so you shouldn't be taking too many arrows. Thanks again for your business.

Dave

(702)580-5760